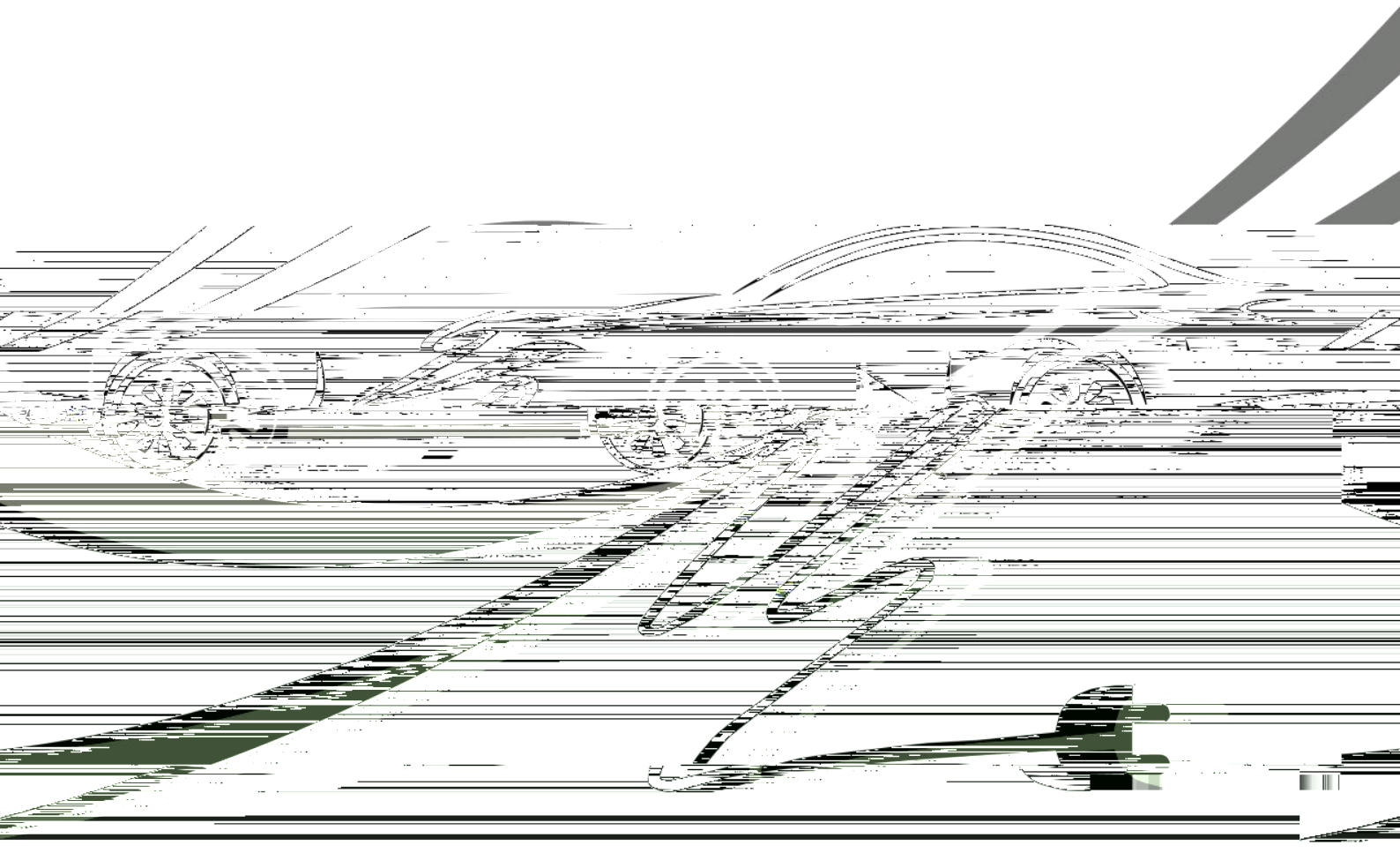


股票简称：科林电气  
股票代码：603050

KE-6710

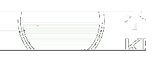
32 63 A

V1.1





V1.0	2022-06-29	
V1.1	2024-03-26	



	.....	<b>3</b>
<b>1</b>	.....	<b>4</b>
<b>2</b>	KE-6710 .....	<b>4</b>
2.1		
2.2		
2.3		
2.4		
<b>3</b>	.....	<b>6</b>
3.1		
3.2	" "	
<b>4</b>	.....	<b>13</b>
<b>5</b>	.....	<b>15</b>
<b>6</b>	.....	<b>15</b>
<b>7</b>	.....	<b>16</b>

1

2





3

4

1

KE-6710-Q1

2 KE-6710

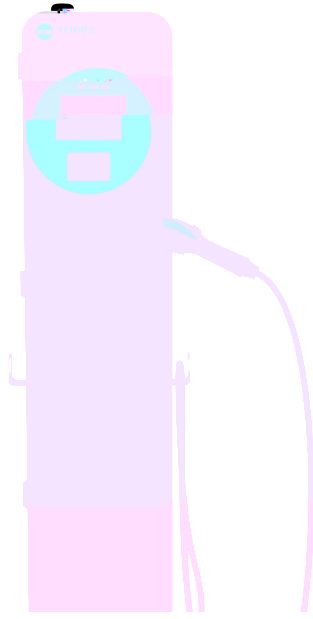
2.1

KE-6710-Q1

7kW 40kW

220V/380V

32A/63A



## 2.2

GB/T 20234.1

1

GB/T 20234.2

2

## 2.3

1.0





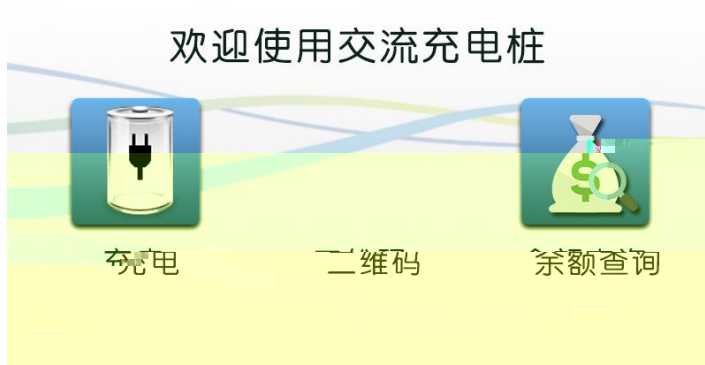
2.4

220V $\pm$  15% / 38

3.1

IC

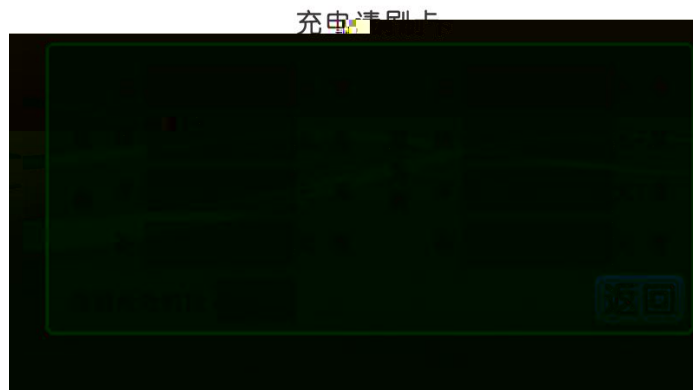
" " 3-1



3-1

" " " " " "

3-2



3-2

" " /

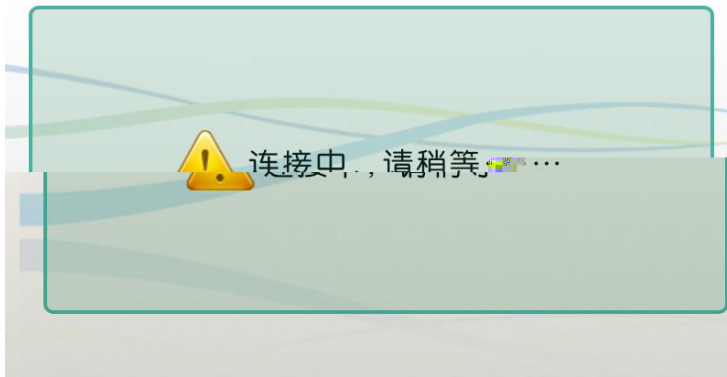
" " " "

IC

"

"

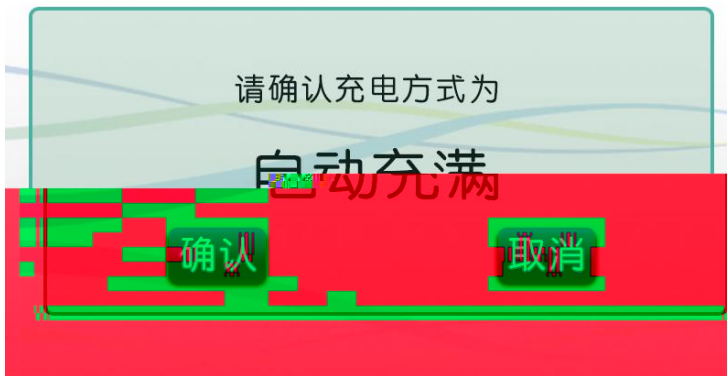
3-3



3-3

" "

3-4



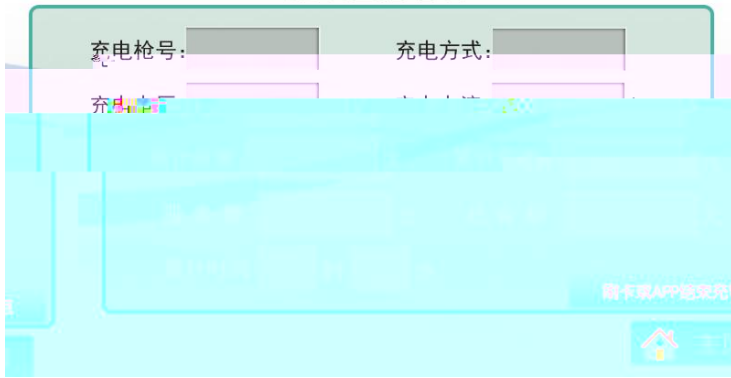
3-4

" " " "

" " " "

3-5

### 充电监控信息



3-5

V

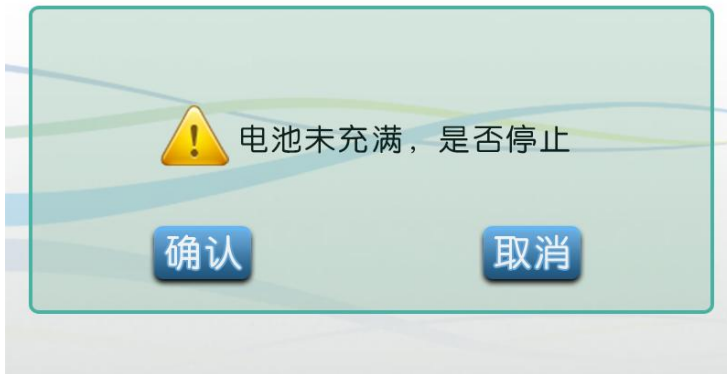
A

A.

"

"

3-6



3-6

"

"

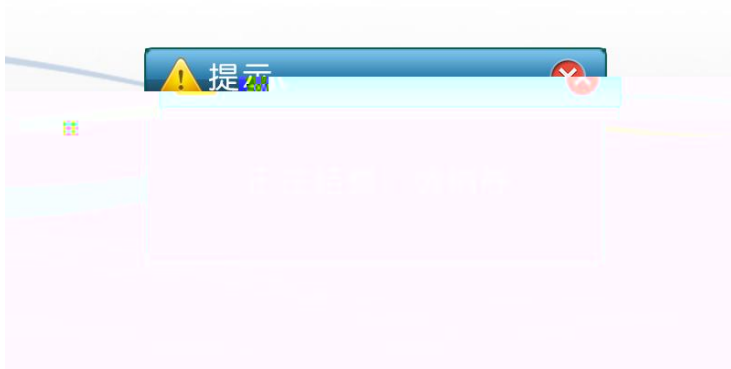
"

"

"

"

3-7



3-7

"

"

3-8



3-8

"

"

IC

"

"

"

"

B.

"

"

3-9



3-9

3-7 3-8

3.2

"

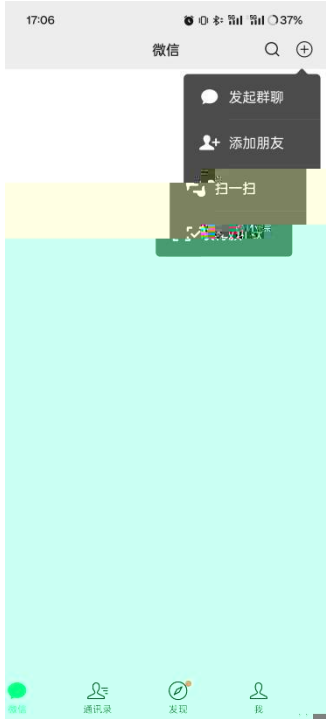
"

"

"

"

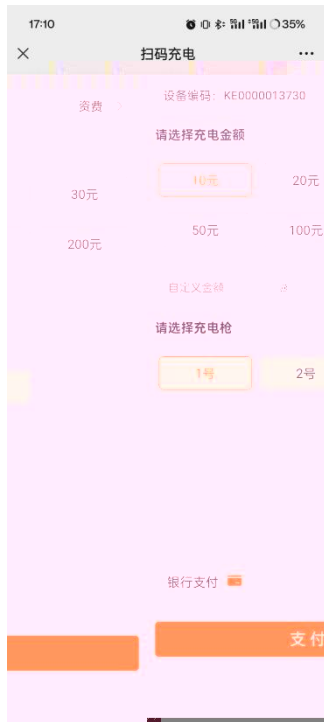
"



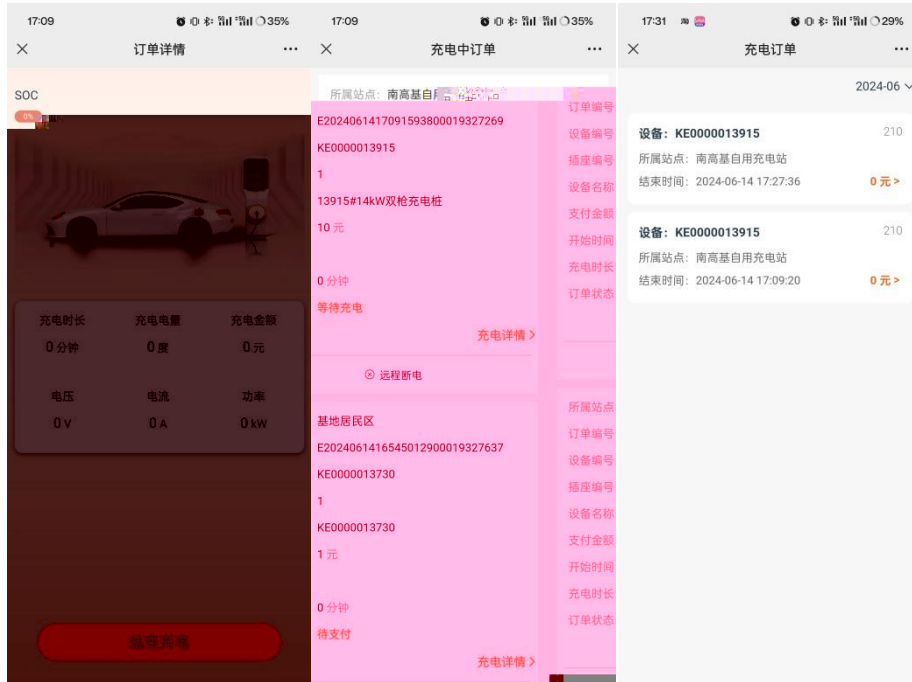
“ ” “ ” “ ” “ ”

“ 2 ”

“ ”



B



“ ”

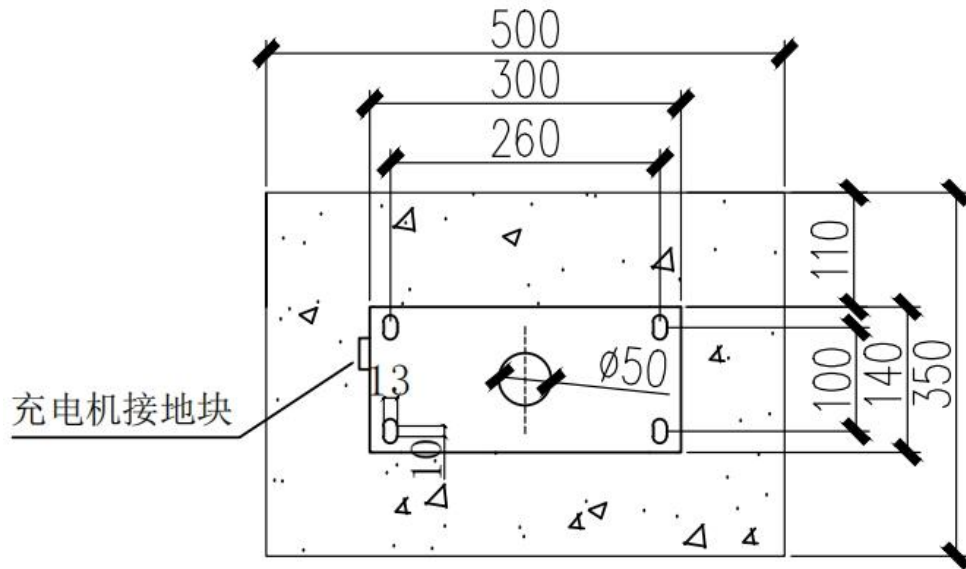
“ ”

500\*200\*350

\* \*

M0\*80

50mm



3

4

32A

63A

50A

ZR-YJV-3\*6

63A

100A

80A

ZR-YJV-5\*16

5

6

7



5

6



# 7

## 7.1

---

---

---

---

## 7.2


## 7.3




1 ( )

/ 1

2

( )

3

/

1

4

1) ( )

2)

3)

4)

5)

/

6)

7)



8)

9)

10)

5

,

(

)

6

,

7

,

050222

0311-85231078

400-0311-128

0311-69099681